



Romeo[®]

**Innovative biofungicide
against foliar fungal diseases**

Peppers – Powdery Mildew



Object	Dose rate
UTC	-
ALD1901 0.45 lb (ABCDE)	0.45 lb/a
ALD1901 0.68 lb (ABCDE)	0.68 lb/a
Sonata 2qt (ABCDE)	2 qt/a
Fontelis 24 floz (A)	24 fl oz/a
Bravo Weatherstik 2 pt (B)	2 pt/a
Inspire Super 20 floz (C)	20 fl oz/a
Miravis Prime 13.4 floz (D)	13.4 fl oz/a
Quintec 6 floz (E)	6 fl oz/a
ALD1901 0.68 lb (A)	0.68 lb/a
Bravo Weatherstik 2 pt (B)	2 pt/a
Inspire Super 20 floz (C)	20 fl oz/a
ALD1901 0.68 lb (D)	0.68 lb/a
Quintec 6 floz (E)	6 fl oz/a

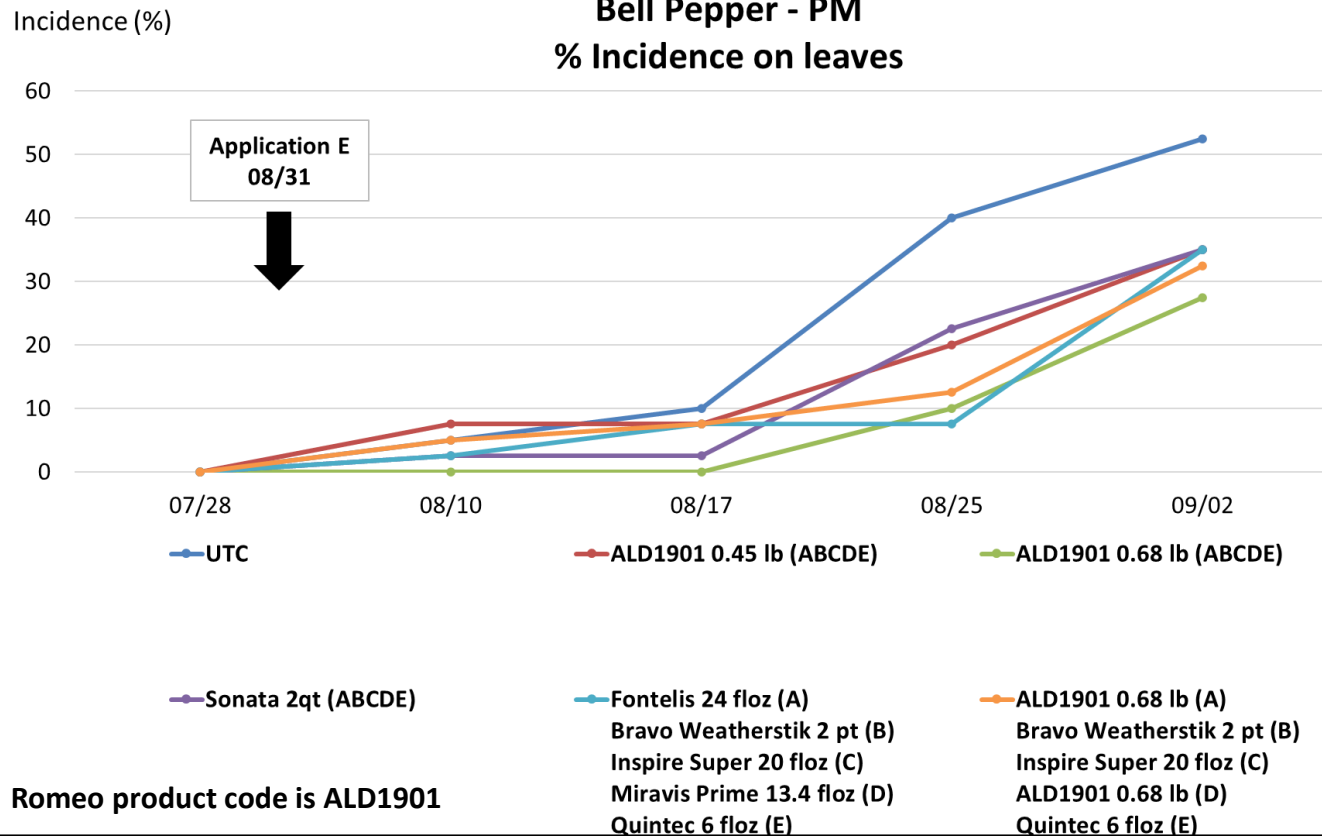
Trial information - Application					
Step	Conditions				Date
	Material	Vol. water	T°	Stage	
<i>Planting</i>					<i>09/05/2020</i>
Application A	Backpack	50 GPA	70	BBCH 81	24/07/2020
Application B	Backpack	100 GPA	62	BBCH 83	03/08/2020
Application C	Backpack	100 GPA	74	BBCH 85	14/08/2020
Application D	Backpack	125 GPA	68	BBCH 87	24/08/2020
Application E	Backpack	125 GPA	64	BBCH 89	31/08/2020

Romeo product code is ALD1901

Bell pepper - Variety Huntington
Powdery mildew = *Leveillula taurica*



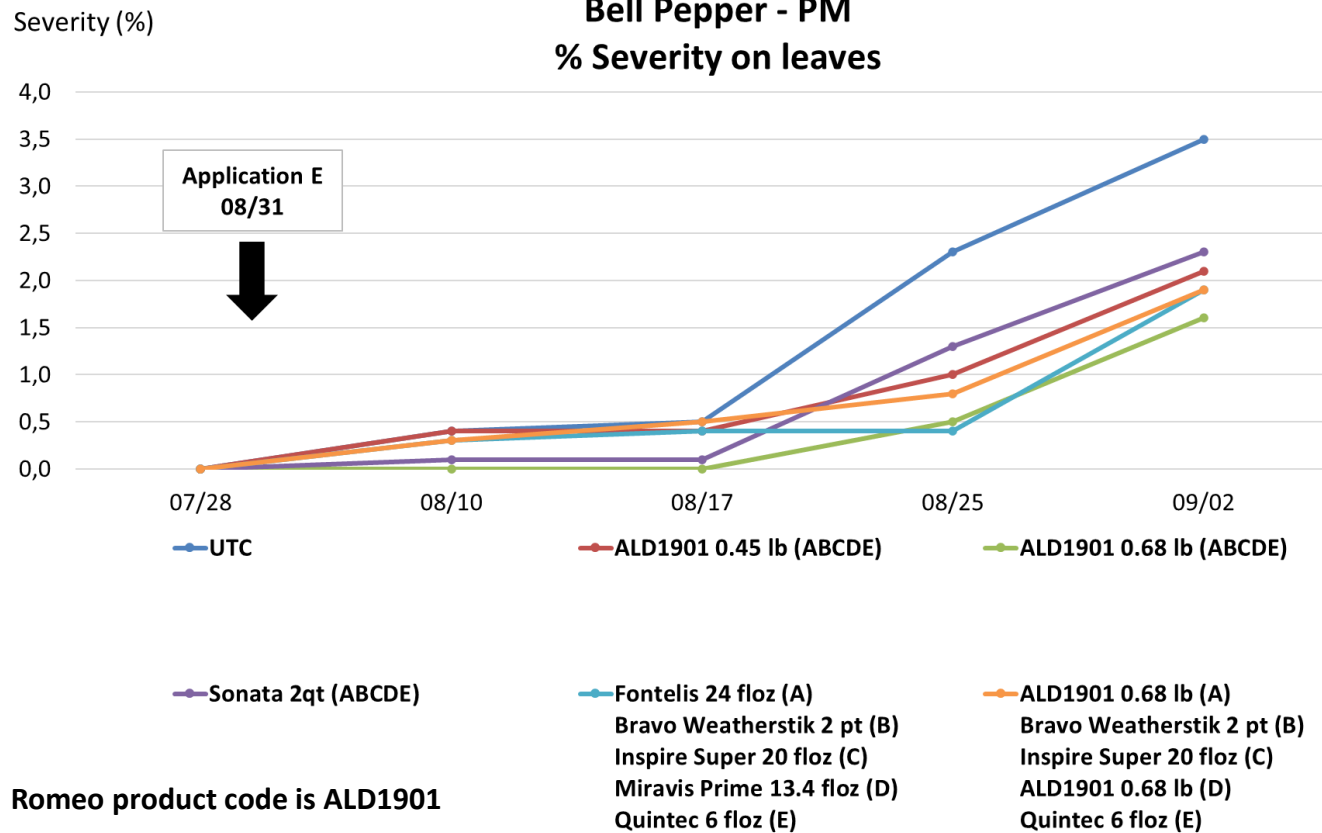
**CA, USA - 2020
Bell Pepper - PM
% Incidence on leaves**



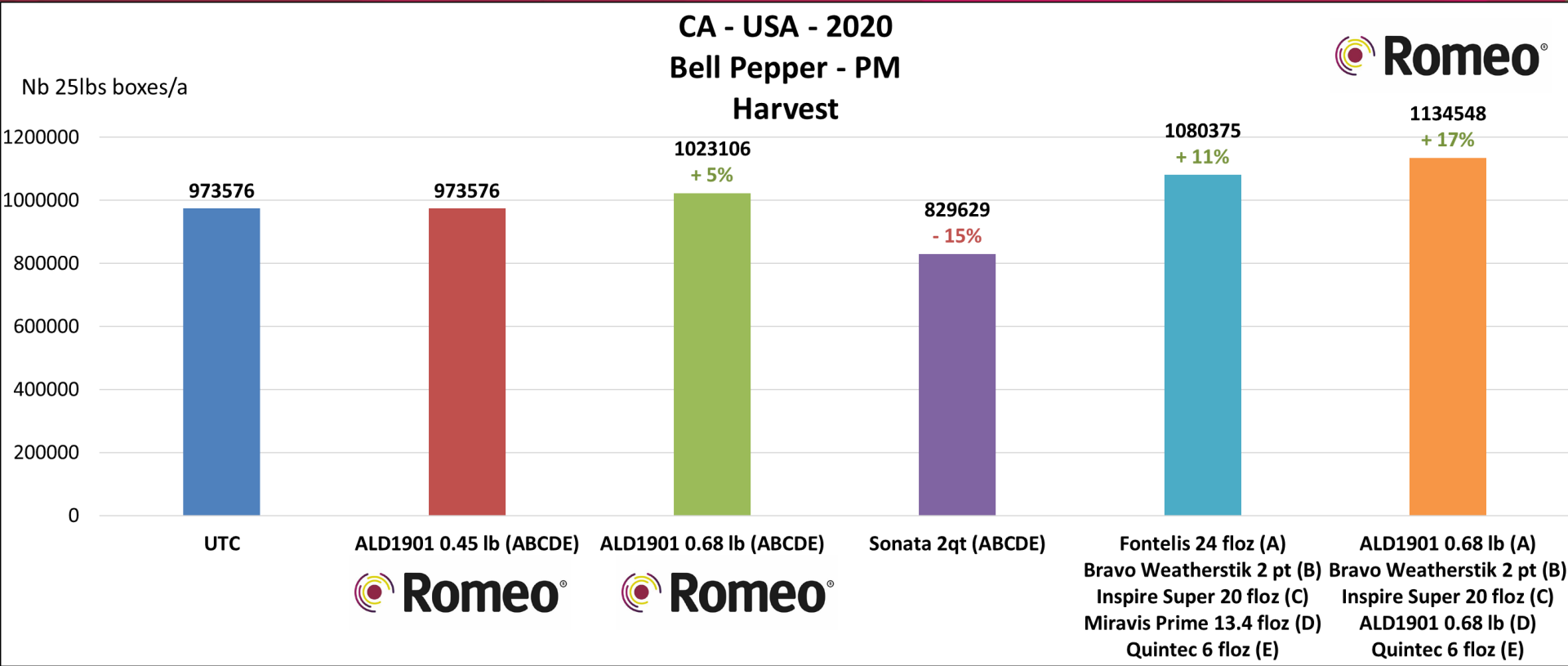
- Moderate disease pressure : 52.5% incidence in UTC.
- Best treatment is ROMEO solo high rate.
- Alternating ROMEO applications in conventional program enhance conventional program efficacy.



**CA, USA - 2020
Bell Pepper - PM
% Severity on leaves**



- Low disease pressure : 3.5% severity in UTC.
- Best treatment is ROMEO solo high rate.



- Romeo stand alone increases the yield by +5%.
- Romeo program increases the yield by +17% compared to UTC, +5% compared to the conventional program.

Romeo product code is ALD1901

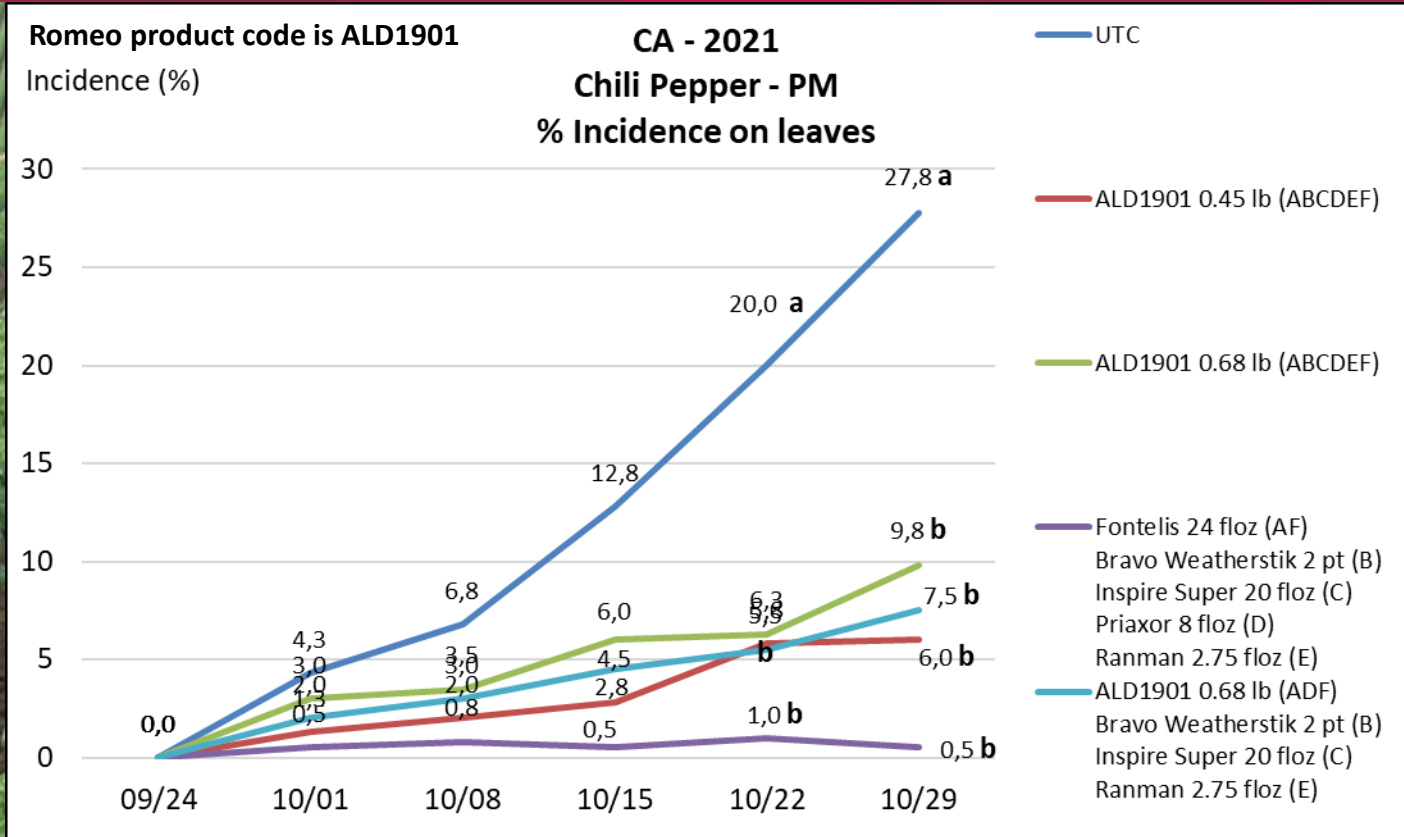


Treatments	Dose rate
UTC	-
ALD1901 0.45 lb (ABCDEF)	0.45 lb/a
ALD1901 0.68 lb (ABCDEF)	0.68 lb/a
Fontelis 24 fl oz (AF)	24 fl oz/a
Bravo Weatherstik 2 pt (B)	2 pt/a
Inspire Super 20 fl oz (C)	20 fl oz/a
Priaxor 8 fl oz (D)	8 fl oz/a
Ranman 2.75 fl oz (E)	2,75 fl oz/a
ALD1901 0.68 lb (ADF)	0.68 lb/a
Bravo Weatherstik 2 pt (B)	2 pt/a
Inspire Super 20 fl oz (C)	20 fl oz/a
Ranman 2.75 fl oz (E)	2,75 fl oz/a

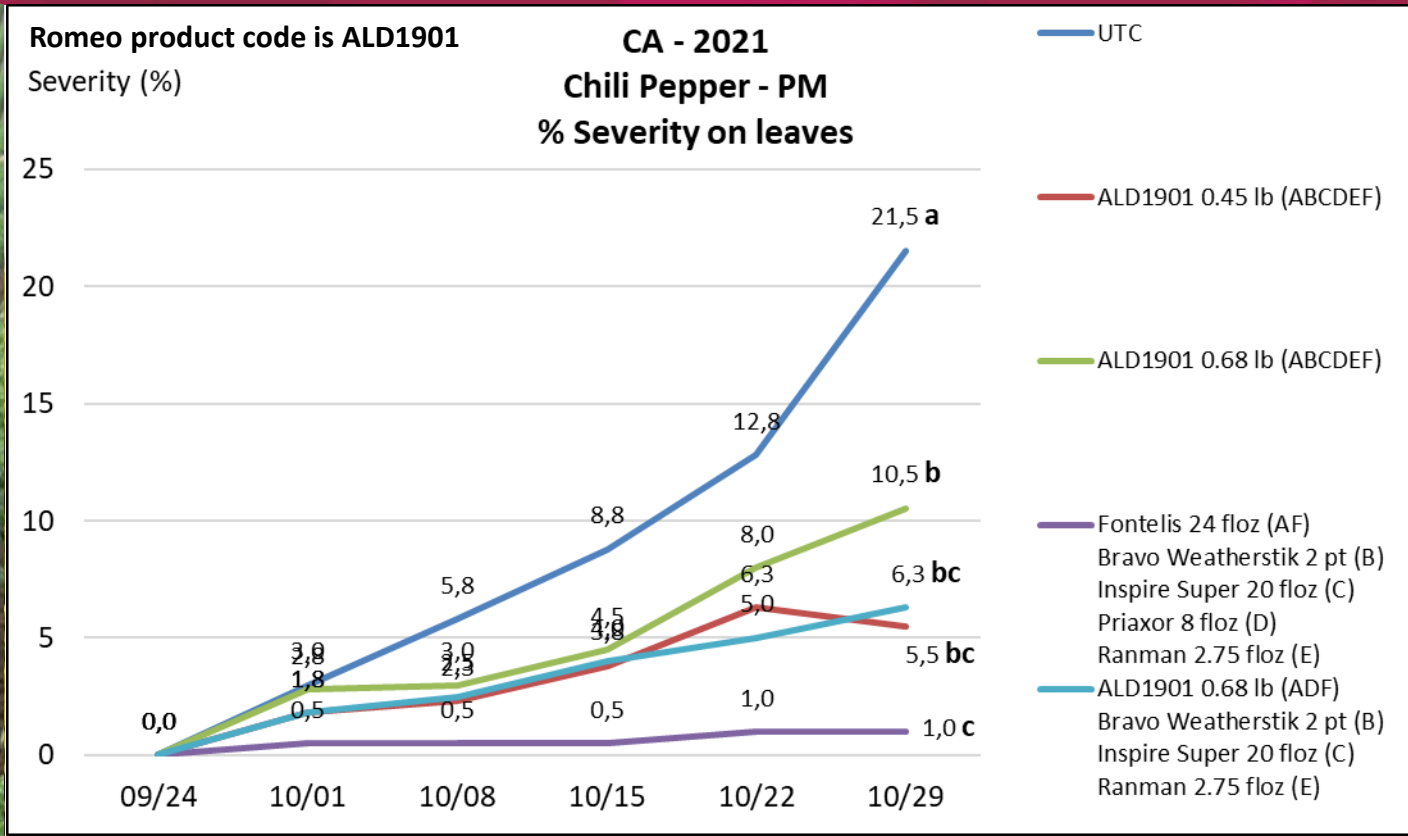
Romeo product code is ALD1901

Trial information - Application					
Step	Conditions				Date
	Material	Vol. water	T°(F)	Stage	
<i>Transplantation</i>	<i>By hand ; 0.5 P/ft</i>				<i>01/09/2021</i>
Application A	CO2 Sprayer	29 GPA	83	BBCH 29	23/07/2021
Application B	CO2 Sprayer	29 GPA	87	BBCH 60	03/08/2021
Application C	CO2 Sprayer	29 GPA	76	BBCH 70	13/08/2021
Application D	CO2 Sprayer	29 GPA	78	BBCH 73	24/08/2021
Application E	CO2 Sprayer	29 GPA	84	BBCH 76	03/09/2021
Application F	CO2 Sprayer	29 GPA	76	BBCH 80	14/09/2021
<i>Harvest</i>	<i>by hand</i>				<i>03/11/2021</i>

Jalapeno pepper
Powdery mildew (*Leveillula taurica*)



- Low to moderate disease pressure : 27.8 % incidence in UTC.
- Good efficacy of Romeo solo (65 and 78% efficacy). No statistical difference between both rates.
- Disease shew up late : 1 or 2 additional sprays would have increase the disease control with the different programs using Romeo.



- Low to moderate disease pressure : 21.5 % severity in UTC.
- Good efficacy of Romeo solo (51 and 74% efficacy). No statistical difference between both rates.
- Disease shew up late : 1 or 2 additional sprays would have increase the disease control with the different programs using Romeo.

Tomato – Powdery Mildew

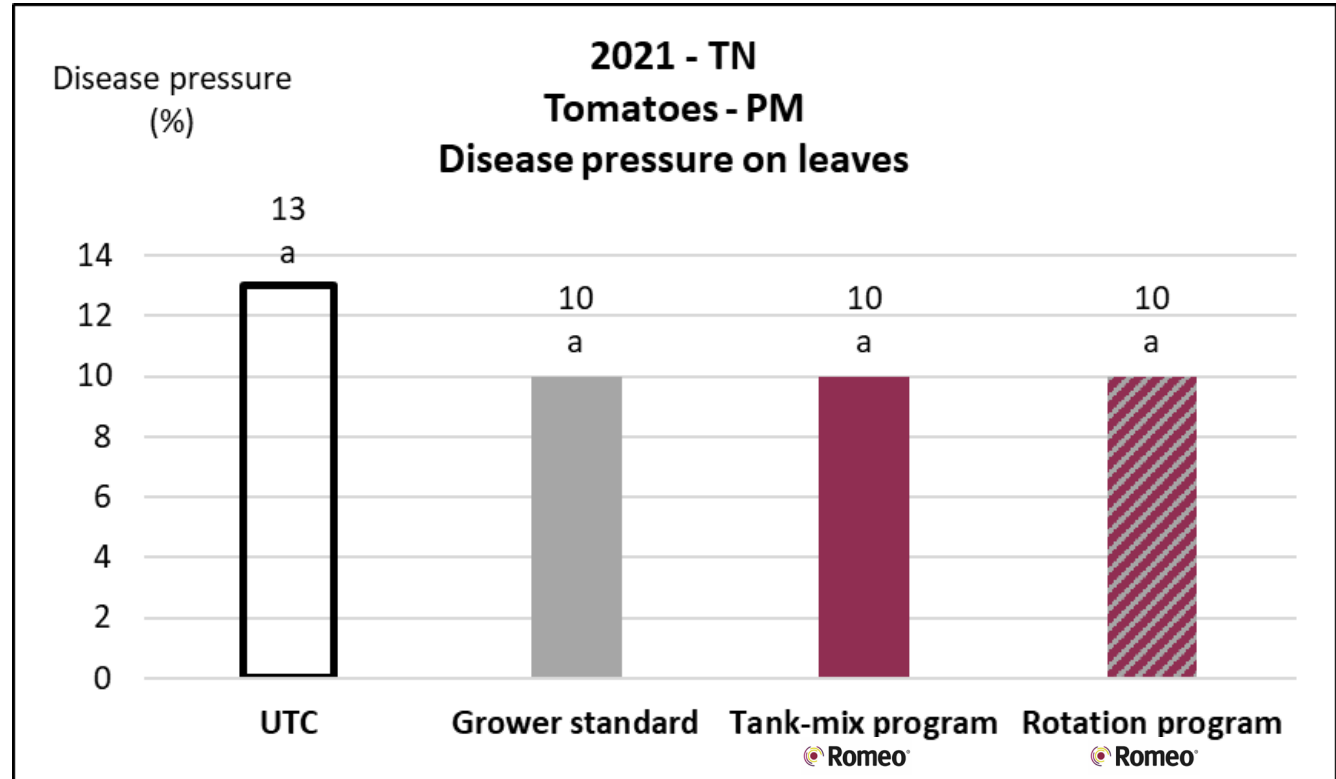


Programs	Treatments	Dose rate
UTC	UTC	-
Grower standard	Fontelis 24 floz (A)	24fl.oz/a
	Bravo Weatherstik 2 pt (B)	2pt/a
	Inspire Super 20 floz (C)	20fl.oz/a
	Priaxor 8 floz (D)	8fl.oz/a
	Ranman 2.75 floz (E)	2,75fl.oz/a
Tank-mix program	ALD1901 0.5 lb (ABCDE)	0,5 lb/a
	Fontelis 24 floz (A)	24fl.oz/a
	Bravo Weatherstik 2 pt (B)	2pt/a
	Inspire Super 20 floz (C)	20fl.oz/a
	Priaxor 8 floz (D)	8fl.oz/a
	Ranman 2.75 floz (E)	2,75fl.oz/a
Rotation program	ALD1901 0.68 lb (AD)	0.68 lb/a
	Bravo Weatherstik 2 pt (B)	2pt/a
	Inspire Super 20 floz (C)	20fl.oz/a
	Ranman 2.75 floz (E)	2,75fl.oz/a

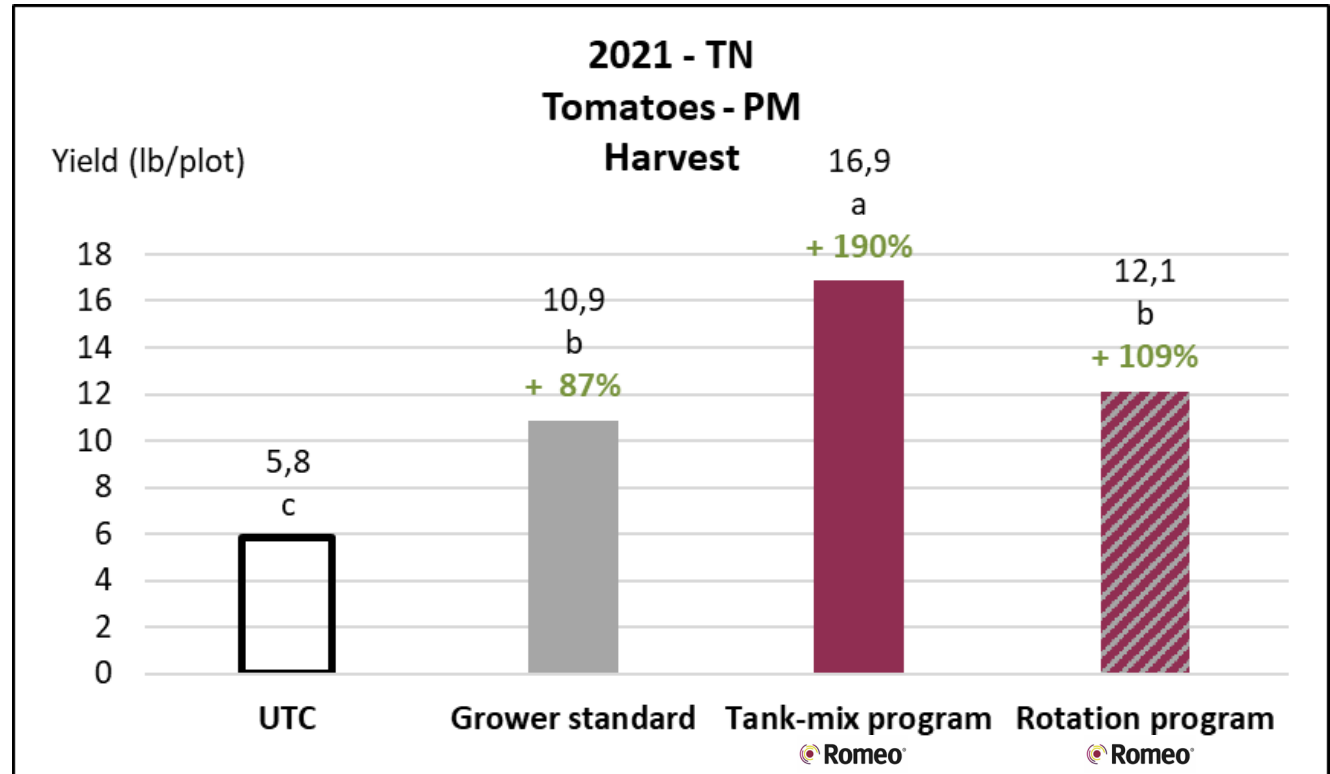
Trial information - Application					
Step	Conditions				Date
	Material	Vol. water	T°(F)	Stage	
<i>Transplantation</i>	<i>By hand ; 0.5 P/ft</i>				<i>14/06/2021</i>
Application A	CO2 Sprayer	15 GAP	95	BBCH 61	28/06/2021
Application B	CO2 Sprayer	15 GAP	80	BBCH 63	09/07/2021
Application C	CO2 Sprayer	15 GAP	85	BBCH 65	19/07/2021
Application D	CO2 Sprayer	15 GAP	96	BBCH 69	30/07/2021
Application E	CO2 Sprayer	15 GPA	94	BBCH 75	09/08/2021
<i>Harvest</i>	<i>by hand</i>				<i>03/09/2021</i>

Tomatoes, variety Mountain Fresh
4 replicates
Powdery mildew

Romeo product code is ALD1901



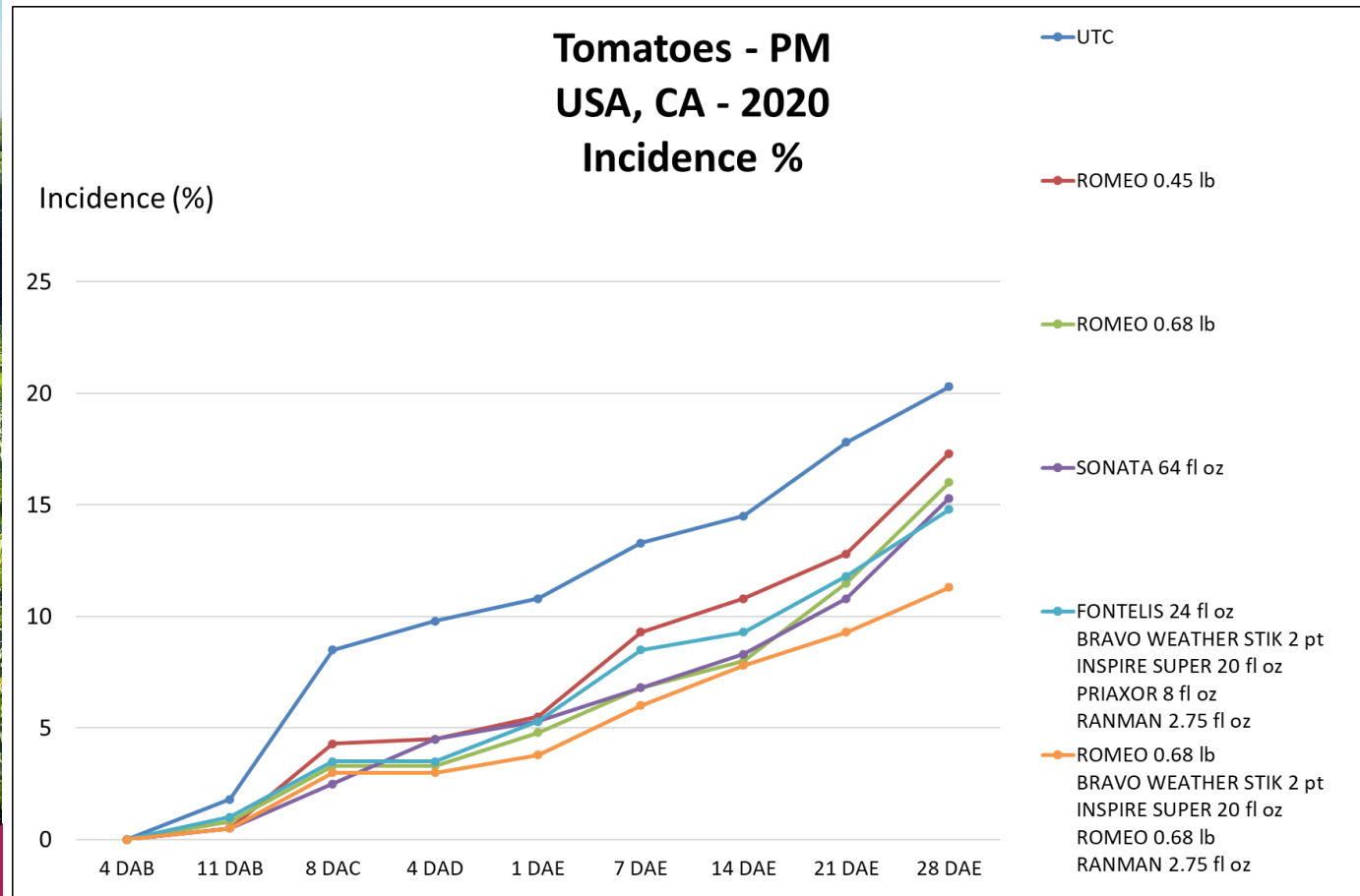
- Low disease pressure : 13%
- No difference between treatments

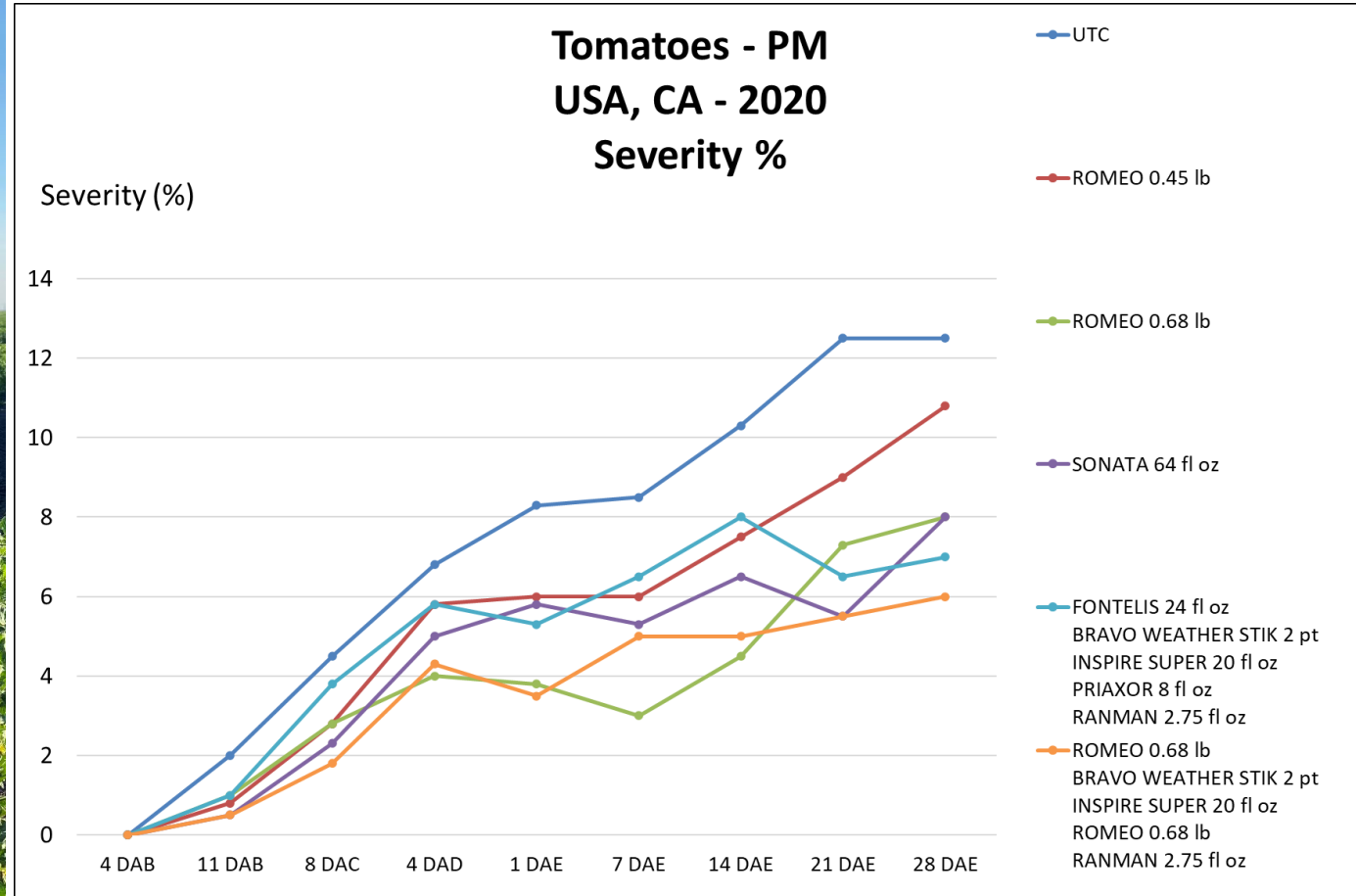


➔ Yield increase when ROMEO is added into the program in tank-mix and in rotation



- Field trial – **USA (Escalon, CA) - 2020**
- Variety BQ-273, processing tomatoes
- 5 foliar applications – 10 days interval – 35 GPA
- Natural contamination





- Moderate disease pressure (20.3% inc ; 12.5% sev in UTC)
- Dose effect : infection in 0.45 lb/a (red) \geq 0.68 lb/a (green)
- Romeo Program (orange) better than conventional grower program (light blue)



The division dedicated to plant protection, stimulation
and nutrition



BUILT on
TRUST